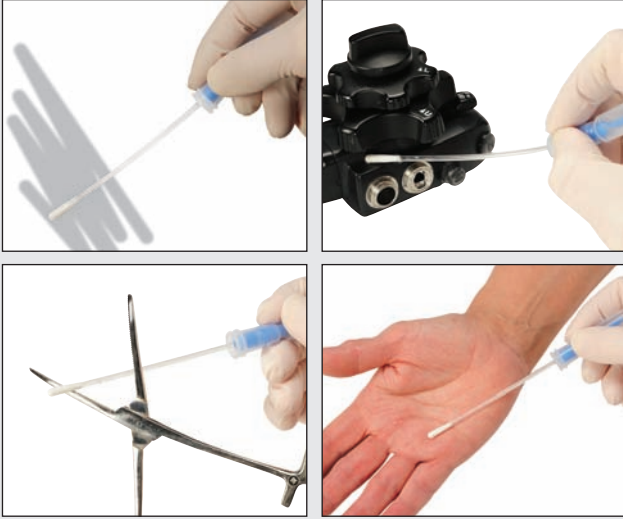


# Test Swab Instructions

## Step 1



### Swab

When collecting a sample, make sure to use aseptic techniques. Do not touch the swab or the inside of the sampling device with fingers.

1. On the SafeStep hand held device press the power switch and let it calibrate for 60 seconds, a countdown on the screen will inform you when it has finished.
2. Holding the swab tube, twist and pull the top of the swab out of the swab tube.
3. **FLAT SURFACES:** Thoroughly swab a standard 10 x 10cm (4 x 4 inches) area of interest for a typical flat surface.  
**SCOPES, INSTRUMENTS & HANDS:** Ensure swabbing technique remains consistent for each swab.

## Step 2



### Snap and Shake

1. After swabbing desired test area, place swab back in swab tube.  
*The sample can be left for up to 4 hours on the swab bud before activating the device; however, once activated the sample must be read in SafeStep hand held device within 60 seconds.*
2. To activate the device hold the swab tube firmly and use the thumb and forefinger to break the Snap Valve by bending the bulb forward and backward. Squeeze the bulb twice, expelling all liquid down the swab shaft.
3. Bath the swab bud in liquid by gently shaking for 3 seconds.

*Place the Test Swab into the SafeStep hand held device within 60 seconds to insure proper reading.*

## Step 3



### Verify

1. Insert the Test Swab tube into the hand held device, close and press the OK button.
2. Allow the unit to countdown 15 seconds, there-by displaying the amount of ATP that is present in the test sample.
3. Readings at or below 45 indicate that the surface is considered clean for surgical instruments and scopes.
4. If the reading is greater than 45, the surface is considered dirty and should be recleaned and tested again until it passes.

Application	Recommended Pass/Fail Criteria	
	Pass (RLU)	Fail (RLU)
Scopes and Surgical Instruments	0-45	46 and over
Sterile Processing - General (packing tables, counter tops, etc.)	0-45	46 and over
Washer Disinfectant	0-45	46 and over
Hand Hygiene	0-200	201 and over

## Step 4



### Download

1. At the end of each day/shift, the hand held device will need to be synced to a pc where the readings are downloaded to the SafeStep Monitoring Software.
2. The downloaded data can then be used to produce detailed reports to monitor cleaning history and determine the effectiveness of the cleaning procedures.
3. After the information has been uploaded into the computer, you may now power down the hand held device and unhook it. (The hand held device automatically stores readings and can be turned off when not in use)